



**AmeriStarRail**  
*Transportation Innovation*

December 15, 2025

Mr. Roger Harris  
President  
National Railroad Passenger Corporation  
1 Massachusetts Avenue, NW  
Washington, DC 20001

Dear Mr. Harris,

To build on Amtrak's record Northeast Corridor ridership, AmeriStarRail was pleased to share with you, in a letter December 2nd, our proposed privately funded partnership and the Libertyliner 250 Service Plan to increase Amtrak's Northeast Corridor (NEC) service 35.1% and seating capacity 21.3% by May 2026.

As described in the service plan, the Libertyliner 250 Boston - Washington Express trains will serve "A New NEC Station TBA." AmeriStarRail is proud to announce that, in our proposed partnership with Amtrak, the new station to be served by Amtrak Libertyliner high-speed trains is New Jersey Transit's Secaucus Junction located on the Northeast Corridor equidistantly between Newark, NJ and Penn Station New York. With 19 trains daily in each direction, the Libertyliner 250 Boston - Washington Express will serve a number of remarkable markets for Amtrak passengers at Secaucus Junction including:

- Over 25,000 passengers per day that pass through Secaucus Junction on NJ Transit's Pascack Valley Line, Bergen/Main Line and Metro North's Port Jervis Line. These rail lines will provide easy access to Amtrak service at Secaucus Junction for numerous communities in Northeastern New Jersey and Southern New York State that currently have great difficulty driving and parking to board Amtrak trains on the Northeast Corridor
- Over 360,000 people living in the most populated area in New Jersey: Hoboken/Jersey City
- The American Dream entertainment & retail center - the second largest mall in America
- MetLife Stadium and the Meadowlands Sports Complex, home of FIFA World Cup 2026 events
- The future Meadowlands Convention Center (MCC)
- The closest train station on the Northeast Corridor to the New Jersey Turnpike (Exit 15X)

With the opportunity to serve more than 1,000 new Amtrak passengers a day, AmeriStarRail projects that Amtrak Libertyliner 250 service at Secaucus Junction will add at least 365,000 annual passengers to Northeast Corridor ridership which is more than the annual ridership of many Amtrak long distance routes around the country.

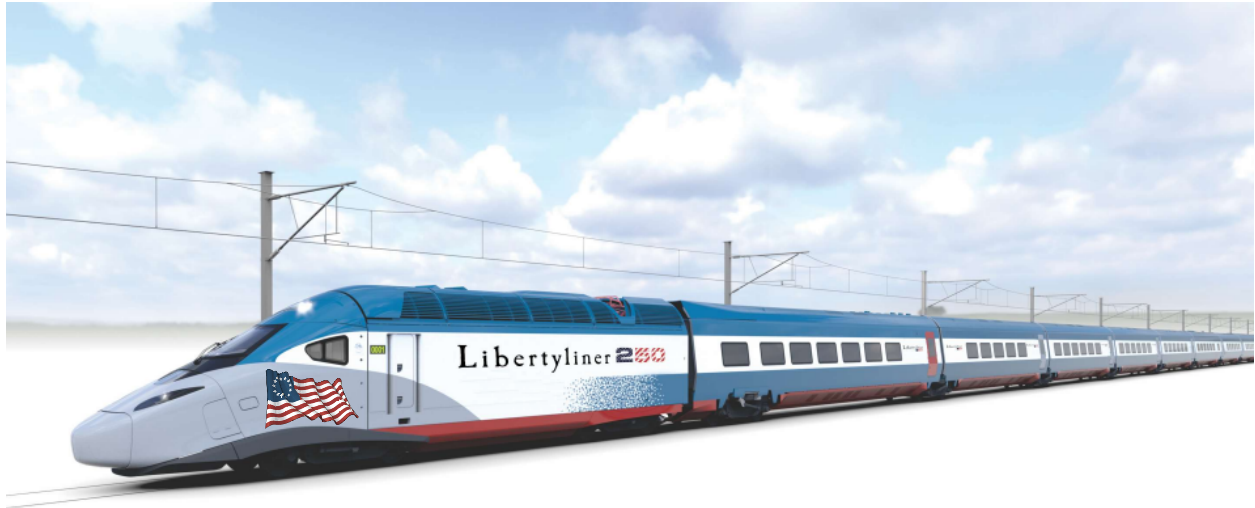
AmeriStarRail's Libertyliner 250 Service Plan provides the seating capacity to serve the additional passengers at Secaucus Junction on the Libertyliner 250 Boston - New York - Washington express trains because most New York - Washington passengers will be riding the Libertyliner 250 New York - Washington nonstops which will be operating daily every hour (5am - 11pm).


Subject to approval by NJ Transit, owner of the station, Amtrak Libertyliner 250 trains can begin serving Secaucus Junction in May 2026 just in time for America 250 and FIFA World Cup 2026 events.

Sincerely,

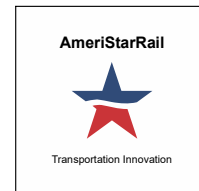
Scott R. Spencer  
Chief Operating Officer

**The Libertyliner 250:  
All Aboard for a Revolutionary Way to Travel on the Northeast Corridor**



**Libertyliner**   
*The fastest trains in America*  
Boston - New York - Philadelphia - Washington

[www.AmeriStarRail.com](http://www.AmeriStarRail.com)



INTELLECTUAL PROPERTY OF  
AmeriStarRail, LLC