

PORT MUSKOGEE

SCAN TO LEARN
MORE ABOUT
PORT MUSKOGEE'S
ADVANTAGES



As one of the nation's most inland ports, Port Muskogee excels in industries where access is everything — access to markets, talent, and industrial sites. Anchored by a 450-acre intermodal transportation complex located on the banks of our nation's most inland waterway, Muskogee is a thriving economic ecosystem with seamless access to airports, interstates and Class I rail. It's here that highly-skilled and low costs meet to form an ideal business environment for companies looking to reduce costs and reach global markets.

MOST INLAND

Year-Round Navigable
Waterway in the US

20 STATES & GULF OF MEXICO

Accessible by McClellan-
Kerr Arkansas River
Navigation System

696,700+ TONS

Of Barge Cargo
Moved Annually

312,300+ TONS

Of Rail Cargo
Moved Annually

FOREIGN TRADE ZONE

Port Muskogee is designated by U.S. Customs as Foreign Trade Zone 164. Port Industries enjoy more than just transportation savings. Foreign Trade Zone benefits reduce costs and increase profits, giving Port Industries a competitive edge to meet the demands of global supply chains.

MULTIMODAL SOLUTIONS

When your business requires you to have it all from the center of it all, look no further than Port Muskogee. From our experienced rail team to our on-site terminal operations, we are proud to offer the following Multimodal Transportation advantages:

- 5.5 miles of railroad with daily services for Class 1 interchange, cargo transfer and storage
- Dedicated and affordable rail crew with 40+ years of experience
- Harbor service with 1,200 horsepower towboat
- Fleeting and staging areas for up to 75 barges
- One 35 ton and two 10-ton overhead cranes and a 60-ton mobile crane
- Certified rail and truck scales with 200-ton capacity
- Track excavator for unloading bulk commodities from rail
- \$58 million investment in upcoming infrastructure improvements



MUSKOGEE AT A GLANCE

45,000+
25 or Older Population
in Muskogee Co.

530,000+
People Employed
Within 45-Minutes

94%
of U.S. Population
Accessible Overnight
by Road

3
Higher Education
Institutions

#4
Most Affordable
City in U.S.

#5
County in OK for
Capital Investment

Kimbra Scott
PORT DIRECTOR

- 📞 (918) 682-7886
- ✉️ kimbra@portmuskogee.com
- 🌐 PortMuskogee.com



PORT MUSKOGEE
SUCCESS FLOWS FROM MUSKOGEE

53 Miles To Tulsa

MARSHALLING YARD

MUSKOGEE TURNPIKE

MEGA RAIL SITE
44 ACRES

vallourec

MUSKOGEE WATER PLANT

LEASED

PLANNED 50K SF RAIL SERVED WAREHOUSE

LEASED

NEW 80 FT HEAVY LIFT DOCK PLANNED

TRACT J
18 ACRES

PARAGON INDUSTRIES

E HARRIS RD

LEASED

METALS USA

LEASED

QLF

PROFORM GROUP

ERGON

DON CAYO DR

N 43RD ST E

MCCLELLAN-KERR ARKANSAS RIVER NAVIGATION SYSTEM (MKARNS)



SCAN TO VIEW ALL AVAILABLE INDUSTRIAL SITES IN MUSKOGEE

OVERVIEW

2
Industrial Sites Available

3,000 FEET
Of Navigable Waterfront

9 FEET
Channel Depth

CITY-OWNED
Water & Sewer

450 ACRES
Of Industrial Land

OG&E
Electric

350 FEET
Concrete Wharf

ONG
Natural Gas

20
Mooring Dolphins

AT&T
Fiber

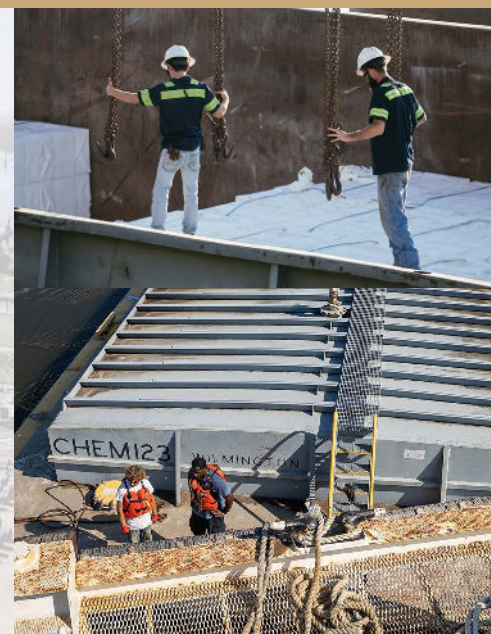
- Available Sites
- Leased Sites
- Highways
- Railway
- Minor Roads



US INLAND WATERWAYS

DISTANCE FROM PORT MUSKOGEE TO MAJOR PORTS

CITY	BARGE TIME (DAYS)
MEMPHIS	5
BATON ROUGE	7
NEW ORLEANS	8
CHICAGO	10
PITTSBURGH	14



WORKFORCE & EDUCATION

SCAN TO LEARN
MORE ABOUT
WORKFORCE &
EDUCATION



As a certified Center for Workforce Excellence by the State of Oklahoma, Muskogee knows that education and state-of-the-art industrial training are at the heart of any sustainable talent pipeline. This is made evident by our game-changing local talent incentives and our region's robust network of two and four-year colleges that are committed to providing quality, accessible educational opportunities to more than 13,800 students.

900,000+

Oklahomans Live
Within 60-Miles

513,200+

Oklahomans Employed
within the Region

238,000+

Oklahomans with an
Associates Degree or
Higher Within 60-Miles

\$54,023

Median
Household Income

RACIAL DIVERSITY

Above National
Average

RIGHT-TO-WORK

State with Low Union
Participation

SUPPLY OF MANUFACTURING LABOR

Above National Average

172,900+

Jobs in the
Region



EDUCATION AT A GLANCE

24

Post-Secondary
Institutions Within 60-Miles

13,800+

Post-Secondary
Completions Annually
within 60-Miles

4

Post-Secondary
Institutions Within
Muskogee

12,000+

Students Enrolled on
Muskogee campuses

2,140+

Post-Secondary Programs
Offered within 60-Miles

MUSKOGEE'S HIGHER EDUCATION PARTNERS

Port Muskogee leads workforce efforts focused experiential learning and career awareness for Muskogee County students linking employers with their future workforce



BACONE
COLLEGE

MUSKOGEE'S LARGEST EMPLOYERS



PROUD TO BE AN OKLAHOMA CENTER FOR WORKFORCE EXCELLENCE

As a designated Oklahoma Center for Workforce Excellence, we serve Muskogee businesses with talent solutions and act as a liaison to coordinate a comprehensive state-approved workforce plan. Whether you're an existing business in Muskogee or a potential business looking to relocate to the Sooner State, our team is equipped to deploy talent development resources, leverage existing workforce development programs and align post-secondary curriculum with local and regional employment demands.



“The presence of highly-regarded technical schools and a deep pool of existing well-trained talent made Muskogee the easy choice for our operations. This advantage, paired with the strong leadership and partnership we found at the community level, will allow Acme Engineering & Manufacturing to serve the ventilation equipment industry from Oklahoma and around the world.”

JULIE BRUMMETT

Acme Engineering & Manufacturing

INCENTIVES

READY. SET. MOVE.

The Port of Muskogee's workforce effort together with The City of Muskogee Foundation is investing in talent for Muskogee area companies. If an organization has a hard to fill position within Muskogee County or creates a new position with the qualifying NAICS codes and pays more than \$110% of the Muskogee average county wage, the recruit could be eligible for a one-time \$10,000.00 stipend to purchase or build a home in the city limits of Muskogee.



SCAN TO VIEW A COMPLETE LIST OF INCENTIVE CRITERIA



PORT MUSKOGEE
WORK READY MUSKOGEE

HOW WE SUPPORT BUSINESSES

- Targeted hiring events, employee screening and career fairs
- Access to national, state, and local hiring resources and incentives
- Labor market demographic and analytics
- Local talent identification

Sara Nichols
WORKFORCE DEVELOPMENT

- 📞 (918) 682-7886
- ✉️ sara@portmuskogee.com
- 🌐 PortMuskogee.com

EXISTING INDUSTRIES

In Muskogee, you'll find a robust and thriving industrial base built on the skilled and dedicated hands of Oklahomans. We're proud to be the home of world-renowned brands like Georgia-Pacific and Dal-Tile and countless other success stories for companies in advanced manufacturing, automotive, construction materials and food processing.

48,200+
Oklahomans Employed in Manufacturing within 60 miles

\$7.3 BILLION
GDP within the Muskogee Region

1,300+
Manufacturing Establishments within 60 miles

#4
Lowest Cost of Living In the US (*Forbes*)

ADVANCED MANUFACTURING

For generations, advanced manufacturing companies have found success and opportunity in Muskogee thanks to our unmatched access to global markets and a skilled workforce who still takes pride in what they make. Whether you're a business looking to reach new markets, hire skilled talent, reduce operating costs or simply choose to work in a state without red tape, Muskogee is the easy choice for any manufacturing operations.



CONSTRUCTION MATERIALS

From shipping and receiving materials by barge to sourcing materials right in the company's own backyard, Muskogee has major advantages for the construction materials industry. Home to DalTile and Red River Brick, the leaders in ceramic flooring and brick production, Muskogee's existing supply chain network paired with an abundance of skilled talent and available industrial land, make it the perfect location for manufacturing operations.

AUTOMOTIVE

Muskogee is ideally situated to meet the needs of OEMs and part supplier manufacturers due to its central location, low business costs, right-to-work status, high-achieving schools and dependable, skilled workforce. Located within the Northeast Oklahoma Automotive Corridor, Muskogee is anchored by an existing network of automotive manufacturers and surrounded by thousands of acres of developable industrial land, Muskogee is poised to help meet the talent and operations demands as automotive manufacturing evolves to electric vehicles.



FOOD PROCESSING

Muskogee's close proximity to a major port, railways, interstates and utilities infrastructure make logistics and international shipping convenient and cost-effective for global food processing companies. It's only natural that food manufacturing operations excel in a state known for agriculture. For more than a century, companies like Griffin Foods have relied on the skilled hands of Oklahomans and boundless natural resources to produce and deliver the best-known and most respected food brands to the world.

EMERGING INDUSTRIES

ENERGY TECHNOLOGY

The global port city of Muskogee offers multi-modal mobility, a highly skilled workforce, and site assets well suited to the needs of oil, gas and alternative energy technologies. Located at the center of the United States on the McClellan-Kerr Arkansas River Navigation System, Muskogee delivers year-round access to domestic and global markets with the reliable support and assistance needed by both new and existing companies. Muskogee puts your operation at the heart of the U.S. Wind Corridor, in close proximity to oil and gas producers, in a pro-business community where successful energy industry suppliers are already flourishing.



AVIATION & AEROSPACE

Oklahoma has a rich legacy of helping aerospace companies and 120,000+ industry employees reach new heights. Centrally located within the Oklahoma-Arkansas Super Region for Advanced Mobility, Muskogee's regional job growth is outpacing the national average, with more than 7,400 Oklahomans and 43 aerospace manufacturing businesses calling northeastern Oklahoma home. Muskogee offers robust resources and advantages, such as 600 developable acreage at Muskogee-Davis Regional Airport and close proximity to the world's largest MRO facility, to help aviation leaders soar beyond the competition.

TECH

Muskogee has been laying the groundwork for tech operations and innovation for years, fostering an environment where tomorrow's technology leaders can thrive. Today, Muskogee represents a new guard in the tech sector and data storage operations. A move to Muskogee means your company can take advantage of our central location, reliable and affordable energy, close proximity to a major city and a network of postsecondary institutions — all while experiencing one of lowest cost of living and tax burdens in America.



BATTERY & EV SUPPLIERS

Recently named the #1 EV-friendly state and the nation's first network of public EV chargers, Oklahoma is determined to take the leading role in the evolution to electric vehicle manufacturing in America. With its large manufacturing base, low business and energy costs and close proximity to a 400-acre OEM EV mega-manufacturing facility, Muskogee is well-positioned to become a destination for electrical vehicle suppliers and battery producers.



PORT MUSKOGEE
SUCCESS FLOWS FROM MUSKOGEE

FOSTERING TOMORROW'S ECONOMY

As Oklahoma's #5 city for capital investment, Muskogee is ushering in the next chapter of America's industrial renaissance. Get in touch today to learn more about how Muskogee can accelerate the success of your business.

Heather McDowell
ECONOMIC DEVELOPMENT

📞 (918) 682-7886
✉️ heather@portmuskogee.com
🌐 PortMuskogee.com

READY. SET. MOVE.

\$10,000 TOWARD HOME OWNERSHIP FOR QUALIFIED EMPLOYEES

Work Ready Muskogee, together with The City of Muskogee Foundation, is investing in talent for Muskogee area companies. If your organization has a hard to fill position within the qualifying NAICS codes and pays more than \$110% of the Muskogee average county wage, your recruit could be eligible for a one-time \$10,000 stipend to purchase or build a home in the city limits of Muskogee.

PROGRAM CRITERIA

- Available to non-residents of Muskogee
- Incentive can only be used by employee one time and only one incentive per household is available for the life of the incentive
- Applications are made by Muskogee area employers
- Applicant must be employed with a Muskogee Area business that meets the qualifying NAICS
- \$10,000 incentive is paid to employee for the purchase of a home in the city limits of Muskogee upon closing

Sara Nichols

WORKFORCE DEVELOPMENT

📞 (918) 636-9293

✉️ sara@portmuskogee.com

🌐 PortMuskogee.com



**SCAN TO VIEW A COMPLETE
LIST OF PROGRAM CRITERIA**

**PORT
MUSKOGEE**
WORK READY MUSKOGEE