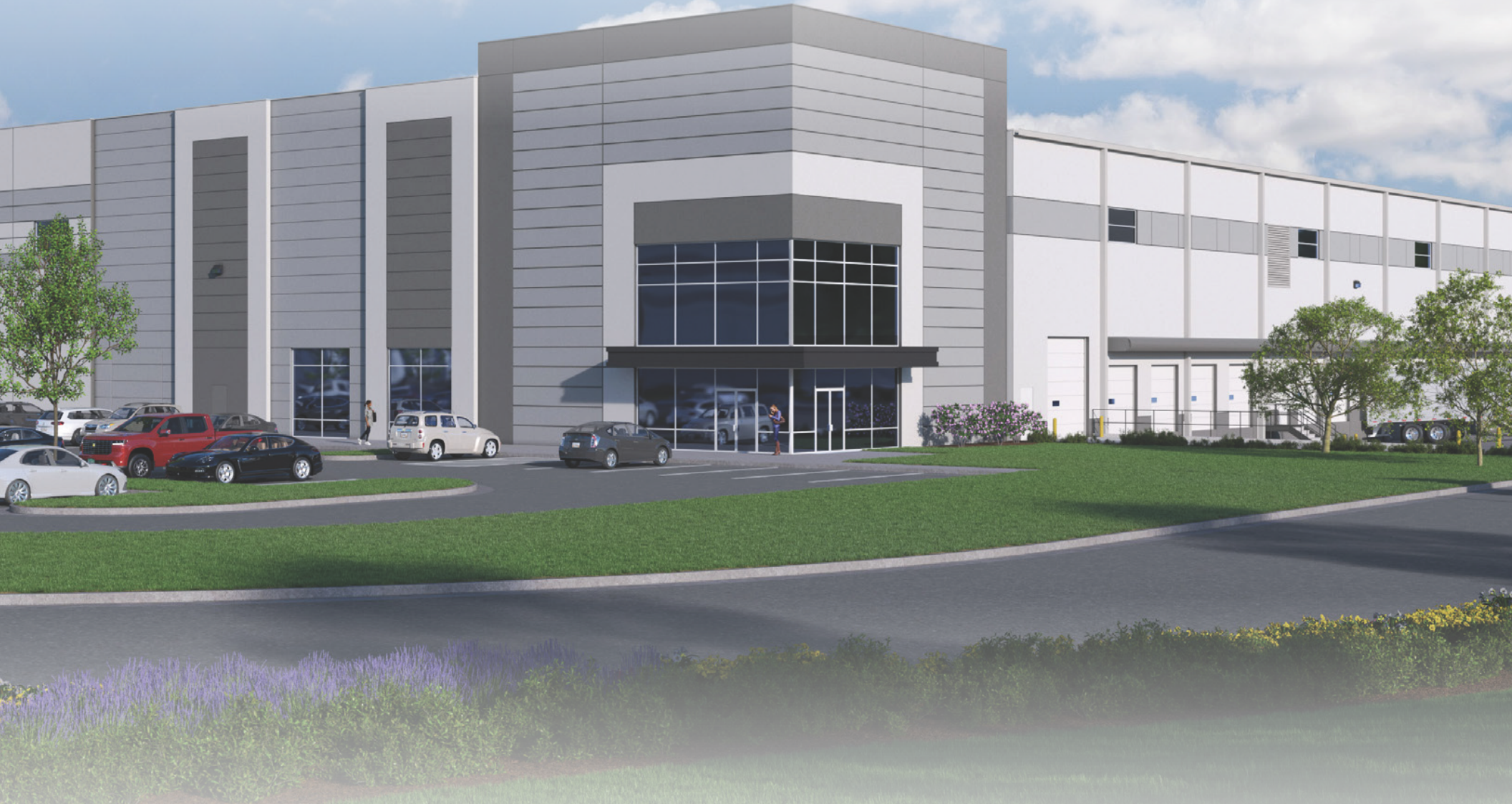


# RailPort Logistics Mobile

**Class A Warehouse/Distribution Buildings - All Rail-Served**

**Theodore, AL 36619**



# Site Overview

Railport Logistics Mobile is a class A, state-of-the-art distribution center in Theodore, AL. The park offers 4,672,000 SF of industrial space with clear heights ranging from 32'-40'. All buildings are CSX rail-served with Phase I delivering in 2024.

## Building 1

Available SF: 342,000  
 Bldg Dimensions: 360' x 950'  
 Clear Height: 32'- 40'  
 Column Spacing: 50' x 50'  
 Loading Docks: 54  
 Drive Ins: 2  
 Trailer Parking: 69  
 Auto Parking: 185

## Building 2

Available SF: 444,000  
 Bldg Dimensions: 370' x 1200'  
 Clear Height: 32'- 40'  
 Column Spacing: 50' x 50'  
 Loading Docks: 72  
 Drive Ins: 2  
 Trailer Parking: 92  
 Auto Parking: 100

## Building 3

Available SF: 513,000  
 Bldg Dimensions: 570' x 900'  
 Clear Height: 32'- 40'  
 Column Spacing: 50' x 50'  
 Loading Docks: 112  
 Drive Ins: 4  
 Trailer Parking: 144  
 Auto Parking: 340

## Building 4

Available SF: 217,000  
 Bldg Dimensions: 310' x 700'  
 Clear Height: 32'- 40'  
 Column Spacing: 50' x 50'  
 Loading Docks: 37  
 Drive Ins: 2  
 Trailer Parking: 49  
 Auto Parking: 150

## Building 5

Available SF: 217,000  
 Bldg Dimensions: 310' x 700'  
 Clear Height: 32'- 40'  
 Column Spacing: 50' x 50'  
 Loading Docks: 36  
 Drive Ins: 2  
 Trailer Parking: 42  
 Auto Parking: 152

## Building 6

Available SF: 310,000  
 Bldg Dimensions: 310' x 1000'  
 Clear Height: 32'- 40'  
 Column Spacing: 50' x 50'  
 Loading Docks: 58  
 Drive Ins: 2  
 Trailer Parking: 74  
 Auto Parking: 220

## Building 7

Available SF: 310,000  
 Bldg Dimensions: 310' x 1000'  
 Clear Height: 32'- 40'  
 Column Spacing: 50' x 50'  
 Loading Docks: 28  
 Drive Ins: 2  
 Trailer Parking: 38  
 Auto Parking: TBD

## Building 8

Available SF: 470,000  
 Bldg Dimensions: 470' x 1000'  
 Clear Height: 32'- 40'  
 Column Spacing: 50' x 50'  
 Loading Docks: 30  
 Drive Ins: 2  
 Trailer Parking: 41  
 Auto Parking: 290

## Building 9

Available SF: 143,000  
 Bldg Dimensions: 260' x 550'  
 Clear Height: 32'- 40'  
 Column Spacing: 50' x 50'  
 Loading Docks: 26  
 Drive Ins: 2  
 Trailer Parking: 37  
 Auto Parking: 46

## Building 10

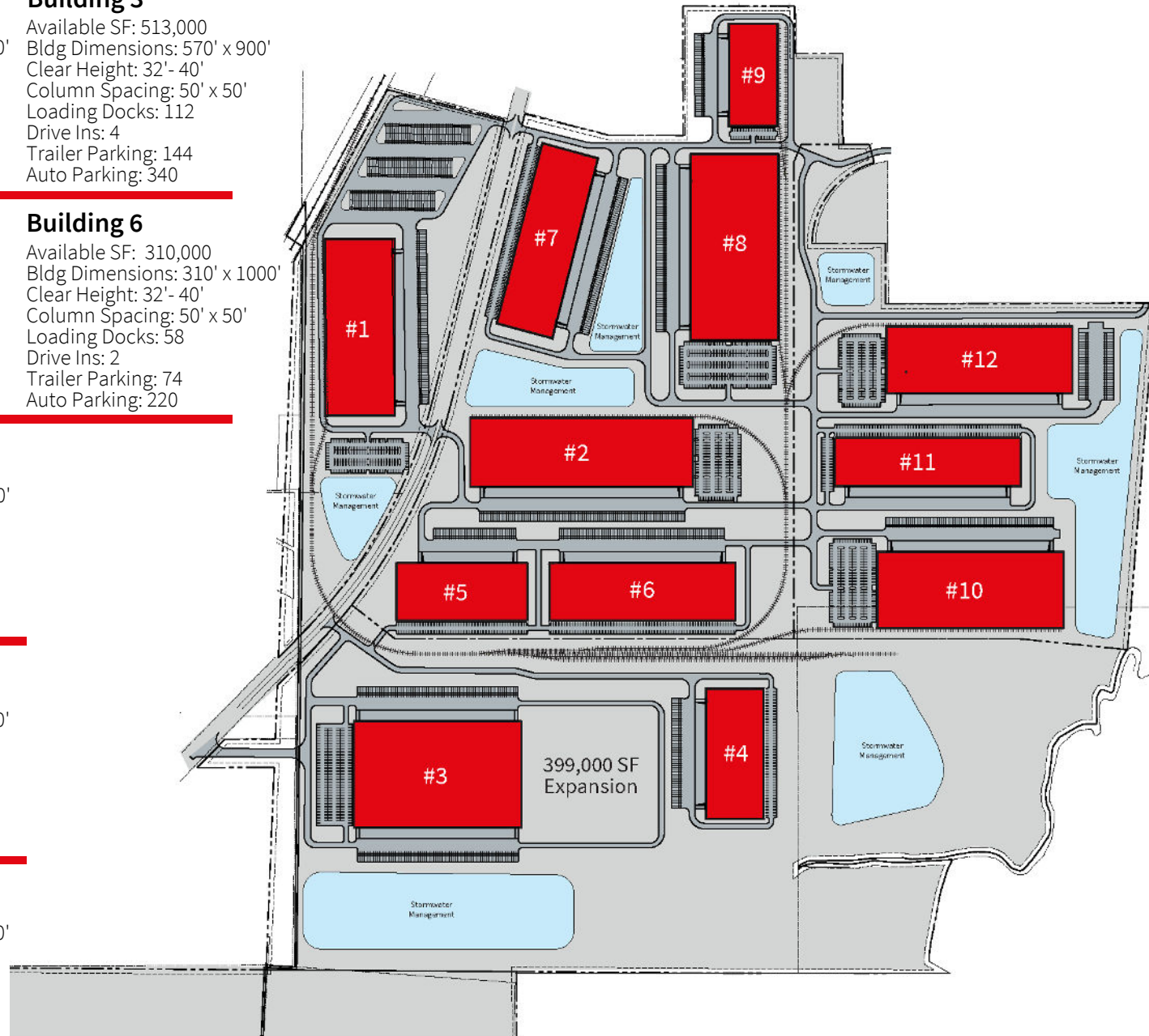
Available SF: 410,000  
 Bldg Dimensions: 410' x 1000'  
 Clear Height: 32'- 40'  
 Column Spacing: 50' x 50'  
 Loading Docks: 32  
 Drive Ins: 2  
 Trailer Parking: 46  
 Auto Parking: 352

## Building 11

Available SF: 260,000  
 Bldg Dimensions: 260' x 1000'  
 Clear Height: 32'- 40'  
 Column Spacing: 50' x 50'  
 Loading Docks: 58  
 Drive Ins: 2  
 Trailer Parking: 74  
 Auto Parking: 280

## Building 12

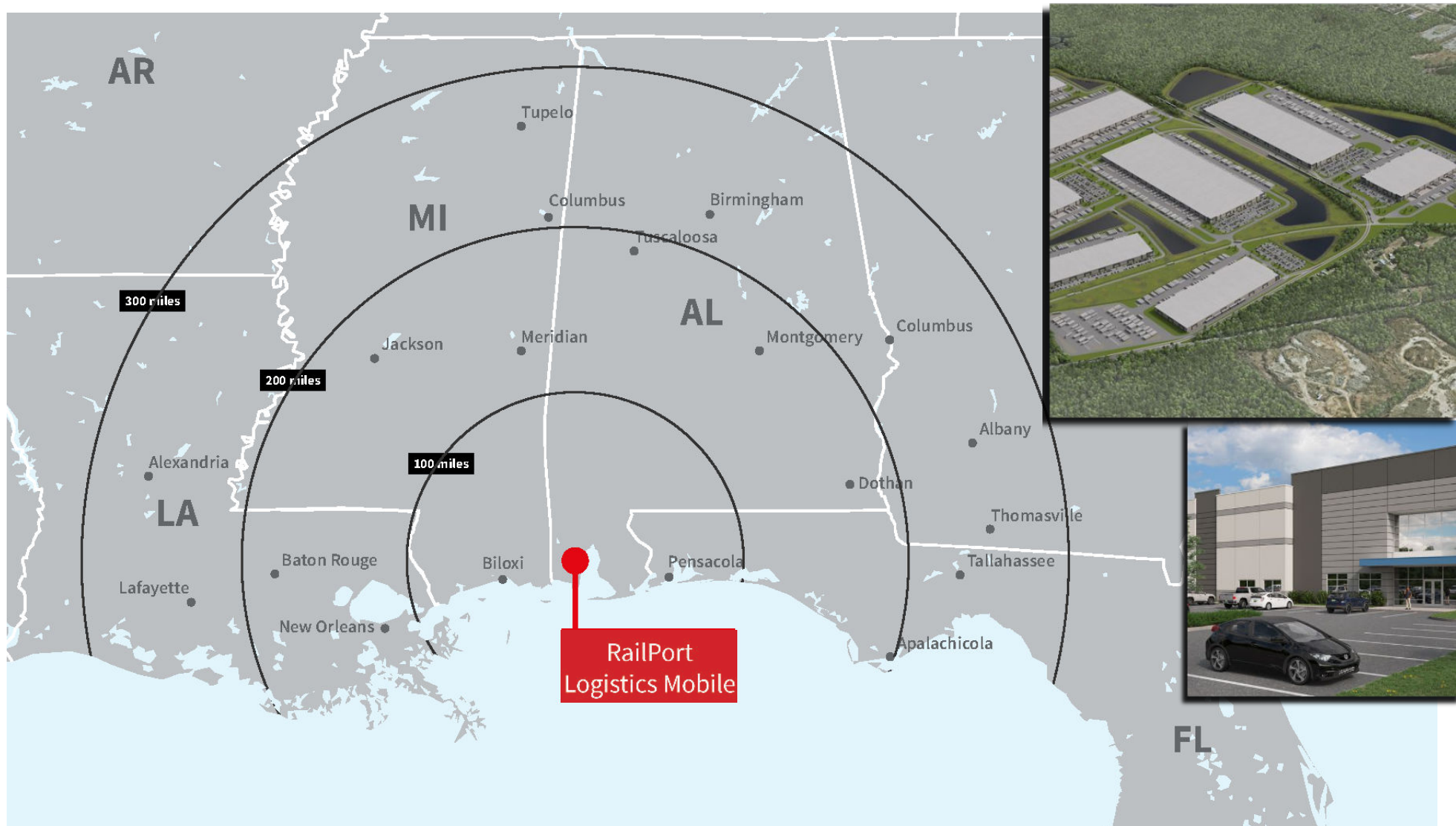
Available SF: 360,000  
 Bldg Dimensions: 360' x 1000'  
 Clear Height: 32'- 40'  
 Column Spacing: 50' x 50'  
 Loading Docks: 58  
 Drive Ins: 2  
 Trailer Parking: 74  
 Auto Parking: 104



# Location Advantages



# Superior Connectivity



## CONTACT:

**Allen Garstecki**

251.610.2374

[Allen.Garstecki@jll.com](mailto:Allen.Garstecki@jll.com)



Although information has been obtained from sources deemed reliable, neither Owner nor JLL makes any guarantees, warranties or representations, express or implied, as to the completeness or accuracy as to the information contained herein. Any projections, opinions, assumptions or estimates used are for example only. There may be differences between projected and actual results, and those differences may be material. The Property may be withdrawn without notice. Neither Owner nor JLL accepts any liability for any loss or damage suffered by any party resulting from reliance on this information. If the recipient of this information has signed a confidentiality agreement regarding this matter, this information is subject to the terms of that agreement. © 2023 Jones Lang LaSalle IP, Inc. All rights reserved.