



OYEN Regional Rail Company



NEW INDUSTRIAL DEVELOPMENT

CN is a world-class transportation leader and trade-enabler, essential to the economy and to the communities it serves.

CN safely transports more than 300 million tons of natural resources, manufactured products and finished goods throughout North America every year.

As the only railroad connecting Canada's Eastern and Western coasts with the U.S. South through a 19,500-mile rail network, CN and its affiliates have been contributing to community prosperity and programs supporting social responsibility and environmental stewardship.



Alberta

Saskatchewan



page 42

page 42

BS

S. Saskatchewan

TRACK CAPACITY:

EXISTING:		
TRACK 1:	3,854 FT	
TRACK 2:	2,516 FT	
TRACK 3:	2,654 FT	
TRACK 4:	2,752 FT	
TRACK S1:	3,500 FT	COMPLETED FALL 2023

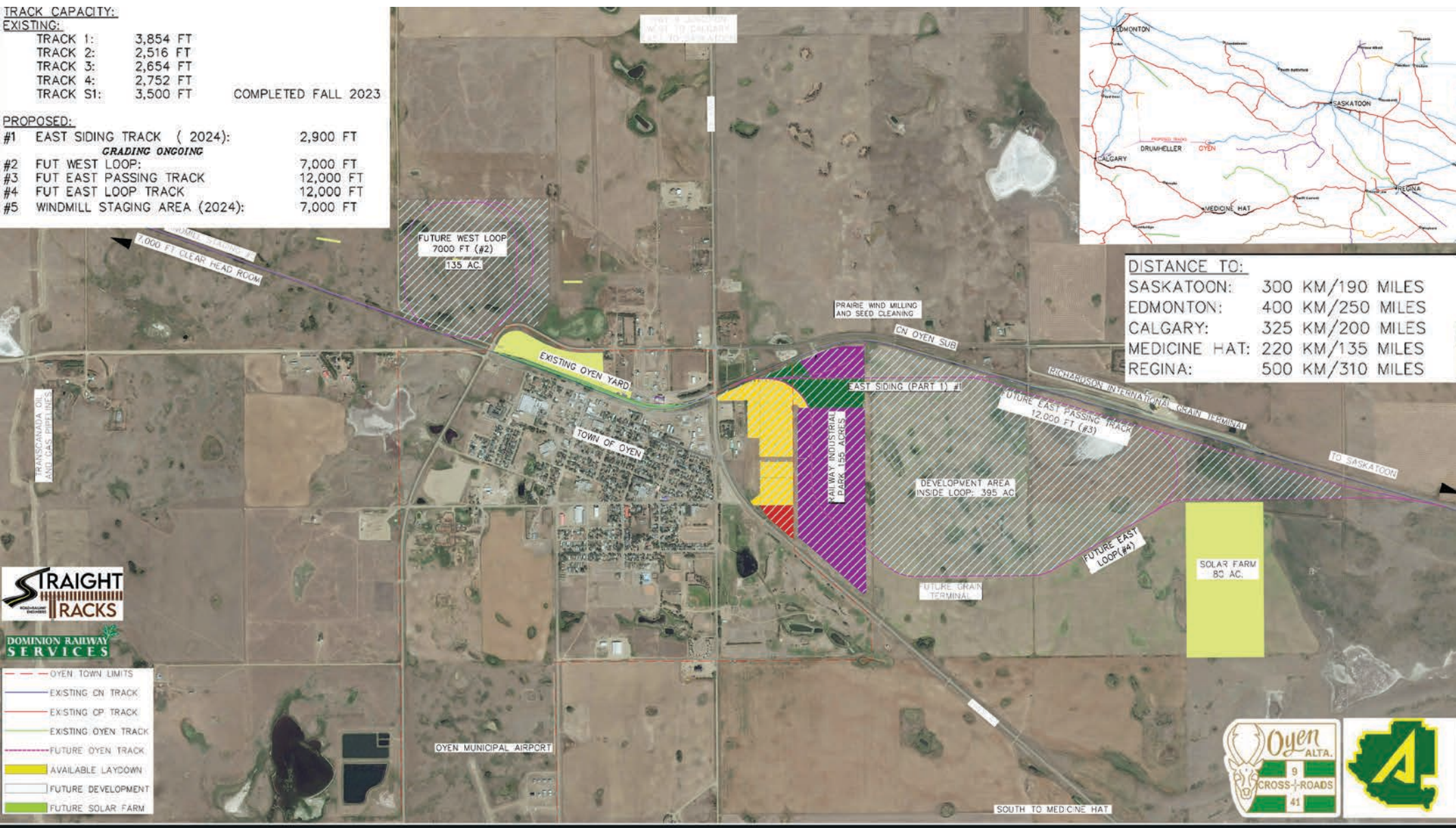
PROPOSED:

#1 EAST SIDING TRACK (2024):	2,900 FT
<i>GRADING ONGOING</i>	
#2 FUT WEST LOOP:	7,000 FT
#3 FUT EAST PASSING TRACK	12,000 FT
#4 FUT EAST LOOP TRACK	12,000 FT
#5 WINDMILL STAGING AREA (2024):	7,000 FT



DISTANCE TO:

SASKATOON:	300 KM/190 MILES
EDMONTON:	400 KM/250 MILES
CALGARY:	325 KM/200 MILES
MEDICINE HAT:	220 KM/135 MILES
REGINA:	500 KM/310 MILES



OYEN Regional Rail Company

Future Expansion 2023 - 2028





- Legend**
- Oyen East ASP Boundary
 - Town Boundary
 - Highway Commercial
 - Industrial
 - Flex (Hwy-C/Ind)
 - Environmental Reserve
 - Future Rail ROW
 - Future Road
 - Marsh
 - Open Water
 - Swamp
 - Future Rail Spur Lines
 - Lot Access

Development Concept

Oyen East Industrial Area Structure Plan



Doug Jones
General Manager
oyenrail@gmail.com
(403)664-0560



Greg Karpo
Rail Consultant
greg.karpo@gmail.com
(587)341-5696